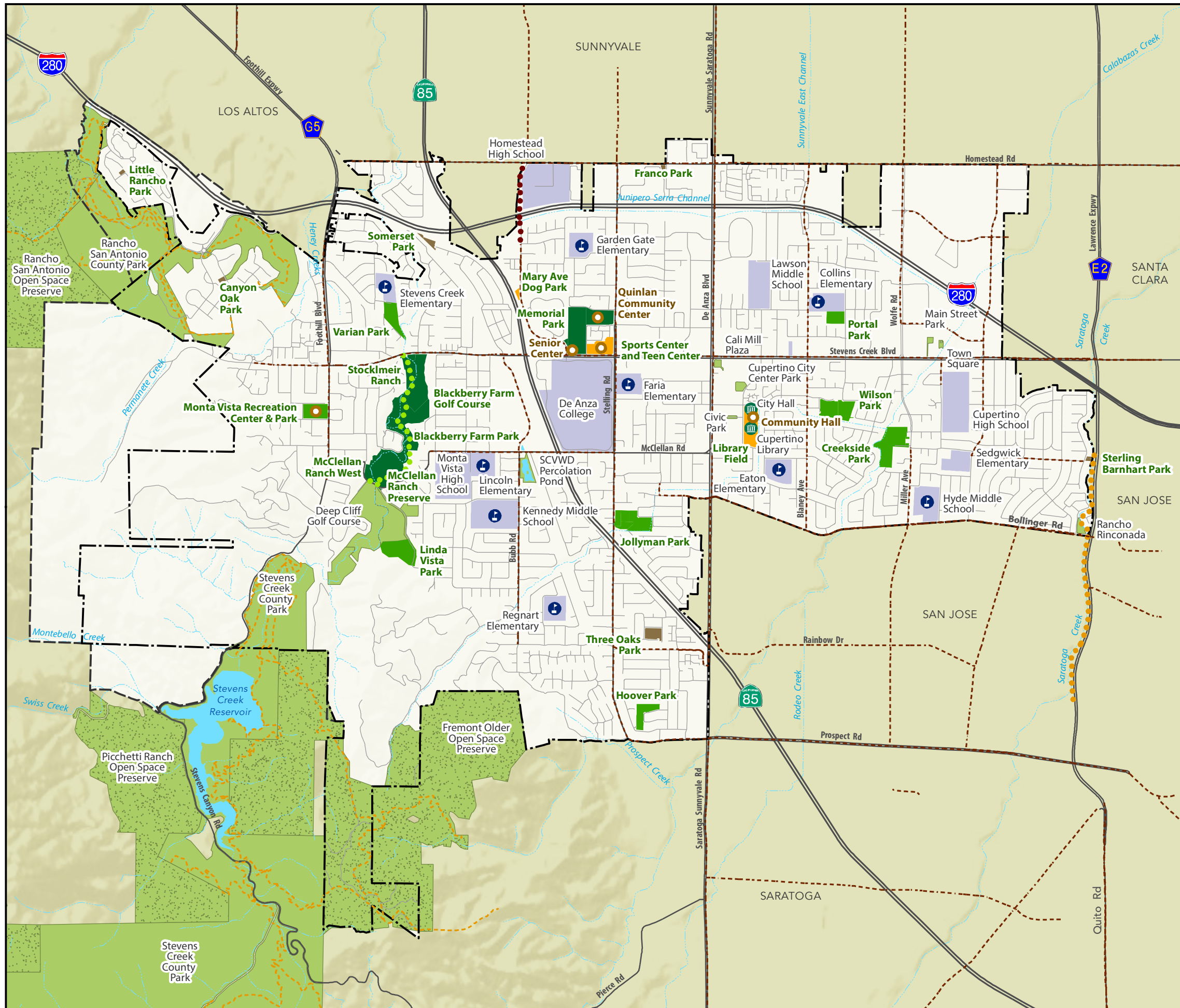




Parks & Recreation System Master Plan

CUPERTINO

Map 1: Existing Parks and Recreation Facilities (DRAFT)



Park and Recreation Facilities

- Cupertino Parks and Recreation Facilities*
- Community Parks
 - Large Neighborhood Parks
 - Small Neighborhood Parks
 - Special Use Sites
- Other Recreation Resources*
- Park & Recreation Resources
 - Open Space Preserves
 - Schools and Colleges

Trail Corridors

- Don Burnett Bicycle-Pedestrian Bridge & Homestead Rd. to Mary Ave. Trail
- Stevens Creek Trail
- Saratoga Creek Trail

Trails and Bike Facilities

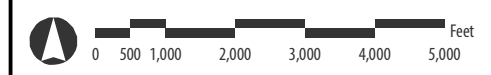
- Park/Open Space Trails
- Class II Bike Lane

Recreation Centers/Fields

- Recreation Centers/Facilities
- Other Facilities
- School Sport Fields Managed by City

Base Map Features

- Cupertino City Boundary
- Cupertino Sphere of Influence *
- Creeks and Channels
- Water Bodies



April 2017

M I G Note: * per Local Agency Formation Commission
Sources: City of Cupertino and Santa Clara County, 2017.